

## UNMANNED SEAFARER CENTRE



**Montrose Port Mission**  
[www.scfs.org/port/montrose](http://www.scfs.org/port/montrose)

**Montrose Seafarer Centre, North Quay,  
Montrose Harbour** (East end of quay, next to pilot station)

**Available 24 hours, free internet tea & coffee.**

Access details are displayed on a poster in the cabin window,  
but if any problems please ring 07470 099 072

## PORT TRANSPORT

There is no regular port transport service available,  
but the town centre facilities are within a safe walking  
distance of the port.

## PORT OFFICE & SECURITY



Montrose Port Authority  
[www.montroseport.co.uk](http://www.montroseport.co.uk)

01674 672 302

## LOCAL PORT HEALTH AUTHORITY



Angus Council  
[envhealth@angus.gov.uk](mailto:envhealth@angus.gov.uk)

01241 465 210

## MARITIME AND COASTGUARD AGENCY UK

[AberdeenMO@mcga.gov.uk](mailto:AberdeenMO@mcga.gov.uk)

020 3817 2001



## INTERPRETERS

The Port Chaplain has access to local interpreters to help with  
their work - including French, Polish, Portuguese, Ukrainian  
and Arabic.



## SEAFARERS' TELEPHONE HELPLINE

SeafarerHelp...the lifeline for seafarers (ISWAN)  
[www.iswan.org.uk/seafarerhelp](http://www.iswan.org.uk/seafarerhelp) +44 (0)20 7323 2737



Issue Date 02/25

Produced by the Merchant Navy Welfare Board and the local seafarers' welfare  
charities. The MNWB is registered as a charity No.212799 in England & Wales and  
No.SC039669 in Scotland. Port map courtesy of Montrose Port Authority.  
Photos courtesy of SCFS. Please pass any amendments directly to MNWB on  
02380 337799 or visit: [www.mnwb.org](http://www.mnwb.org)

PORT INFORMATION LEAFLET

# MONTROSE

## Welcomes All Seafarers



## SHIP WELFARE VISITING ORGANISATIONS



Seafarers' Christian Friend Society  
Port Chaplain  
[www.scfs.org](http://www.scfs.org) 07470 099 072



Stella Maris  
Port Chaplain  
[www.stellamaris.org.uk](http://www.stellamaris.org.uk) 07757 042 722



The Mission to Seafarers  
[www.missiontoseafarers.org](http://www.missiontoseafarers.org) 07581 625 941



Norwegian Seamen's Mission  
Port Chaplain  
[www.sjomannskirken.no](http://www.sjomannskirken.no) 07768 472 134



ITF Inspector 07502 563 470  
ITF HQ meldrum\_helen@itf.org.uk  
[www.itfseafarers.org](http://www.itfseafarers.org) seafsupport@itf.org.uk



Nautilus International 0208 989 6677  
[www.nautilusint.org](http://www.nautilusint.org)



RMT 0800 376 3706  
[www.rmt.org.uk](http://www.rmt.org.uk)



Scan here to  
download a  
digital copy of  
this leaflet



## BANKS / POST OFFICE / MONEY TRANSFER

Post Office, High Street 01674 673 459  
(incs. Western Union)  
Located in the ScotMid Co-op convenience store

\*A selection of major banks have branches located in the town centre.

## SHOPPING

Tesco, Western Road 0345 677 9478  
Aldi, Basin View 0800 042 0800  
Angus Tech, High Street 01674 660 277

(Mobile phone sales & repairs - with discounts on all IT equipment to seafarers)

\* There are a variety of charity shops located in the town centre, where you can buy clothes and presents.

## THINGS TO DO

[www.visitangus.com](http://www.visitangus.com)

Montrose Sports Centre, Marine Avenue 01674 907 600  
(Swimming & Gym)

Montrose Museum, Panmure Place 01674 907 447

Montrose Playhouse, The Mall  
(Cinema & Arts Centre)  
[www.montroseplayhouse.co.uk](http://www.montroseplayhouse.co.uk)

Montrose Air Station Heritage Centre, 01674 678 222  
Waldon Road  
[www.rafmontrose.org.uk](http://www.rafmontrose.org.uk)

Montrose Port Mission also keeps track of local things to do, with regular updates to their website:  
[www.scfs.org/port/montrose](http://www.scfs.org/port/montrose)

## PLACES OF WORSHIP

### Catholic:

St Margaret's Church, Market Street 01674 672 208

### Anglican:

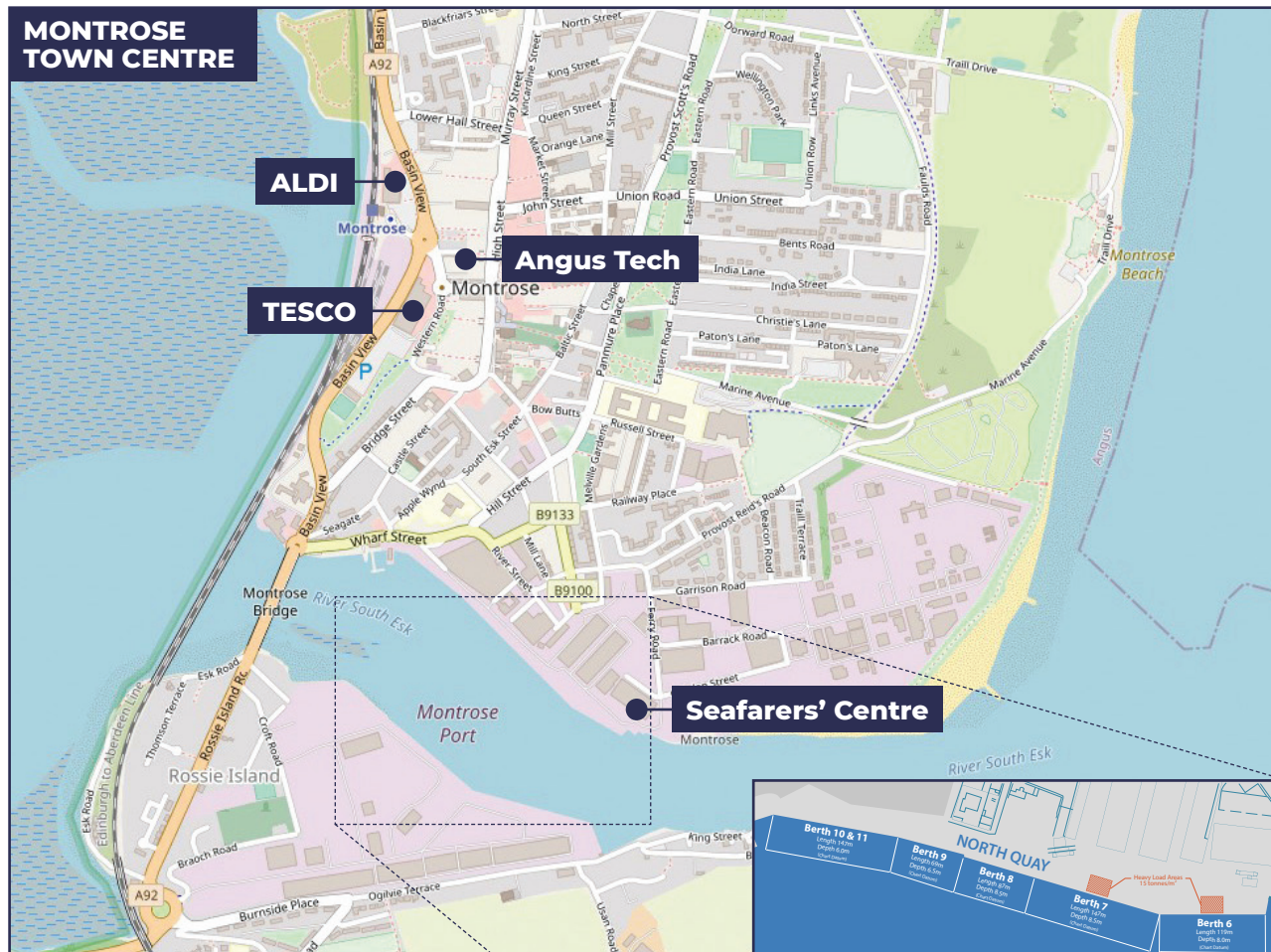
Trinity Church, High Street 01674 672 447

### Evangelical:

Grace Church (based at the Playhouse Arts Centre)  
[www.gracechurchmontrose.com](http://www.gracechurchmontrose.com)

### Baptist:

Montrose Baptist Church, Coronation Way 01674 674 524



## CHEMIST / OPTICIAN

Boots the Chemist, High Street 01674 676 455

Specsavers, High Street 01674 679 080

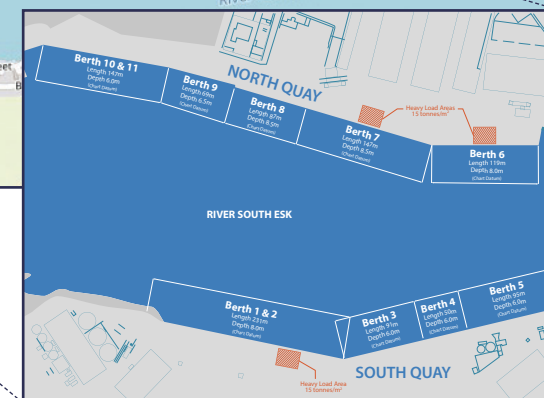
Davidsons Chemist, High Street 01674 672 401

## PUBLIC TRANSPORT

**Train:** National Rail Enquiries 0345 748 4950  
[www.nationalrail.co.uk](http://www.nationalrail.co.uk)

**Bus:** Traveline (Scotland) 0871 200 2233  
[www.travelinescotland.com](http://www.travelinescotland.com)

**Taxi:** Lorimer Cabs 01674 672 557  
01674 675 166  
[www.lorimercabs.co.uk](http://www.lorimercabs.co.uk) 01674 672 149



## LOCAL HOSPITALS

**A&E:** Ninewells Hospital, Dundee 01382 660 111

**Minor Injuries Unit:** 01241 872 584

Arbroath Infirmary, Rosemount Road  
\*You must ring 111 before attending

**NHS Helpline:**  
[www.nhs24.com](http://www.nhs24.com)