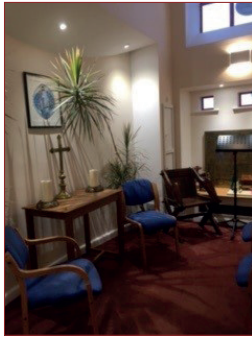


## PRAYER CHAPEL / LOUNGE & LEISURE AREA



## SALE OF DATA SIM CARDS & OTHER PHONE CARDS

Sim cards (3 Mobile, Vodafone & Ivitta), top ups and reduced rate telephone cards are available for purchase at the Bristol Seafarers' Centre and from Ship Welfare Visitors representing the centre. Seafarers are strongly advised to purchase telephone cards only from official Bristol Seafarers' Centre representatives.

## PORT TRANSPORT



## SEAFARERS' TELEPHONE HELPLINES

SeafarerHelp...the lifeline for seafarers  
www.seafarerhelp.org (all seafarers) 00 800 7323 2737

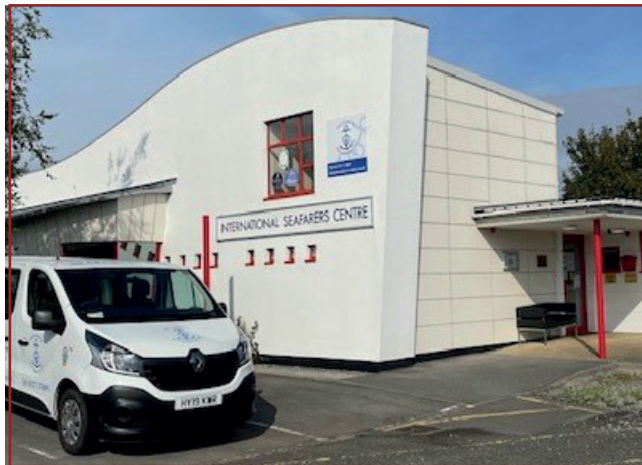
Seafarer Support Referral Helpline  
www.seafarersupport.org (UK seafarers only) 0800 121 4765



Produced by the Merchant Navy Welfare Board (registered as a charity No.212799 in England & Wales and No.SC039669 in Scotland) and the seafarers' welfare charities. Map courtesy of The Bristol Port Company / Photos courtesy of the Port of Bristol Seafarers' Centre. Please pass any amendments **directly** to MNWB on 02380 337799 or visit: [www.mnwb.org](http://www.mnwb.org)

## SEAFARERS' PORT INFORMATION LEAFLET

# BRISTOL WELCOMES ALL SEAFARERS



## PORT OF BRISTOL SEAFARERS' CENTRE

*Serving Portbury and Avonmouth Docks*

Royal Portbury Dock Road, Portbury, Bristol BS20 7XJ  
t: 01275 374 895 or 01275 372 926  
e: [seafareportbury@btconnect.com](mailto:seafareportbury@btconnect.com)  
[www.bristolseafarerscentre.co.uk](http://www.bristolseafarerscentre.co.uk)

## SHIP WELFARE VISITING ORGANISATIONS



Stella Maris 07595 453 063  
[peter.morgan@stellamaris.org](mailto:peter.morgan@stellamaris.org)



The Mission to Seafarers 07493 559 210  
[jeremy.hellier@mtsmail.org](mailto:jeremy.hellier@mtsmail.org)



QVSR 07920 426 321  
[sloader@qvsr.org](mailto:sloader@qvsr.org)



ITF +44 7590 880 285 (messages only)  
[www.itfseafarers.org](http://www.itfseafarers.org)



Nautilus International 0208 989 6677  
[www.nautilusint.org](http://www.nautilusint.org)



RMT 0207 387 4771  
[www.rmt.org.uk](http://www.rmt.org.uk)

## PORT OF BRISTOL SEAFARERS' CENTRE



**Opening Hours: Daily 1pm to 10pm**  
Chapel • Library • Free Wi-Fi (available 24/7 even when Centre closed) • Tea & Coffee Shop • Games Area (Pool Table) • Telephones • Internet Café • Dollars and Euros accepted


## SEAFARERS' INTERNET / LEISURE FACILITIES



## PORT OFFICE & SECURITY

Port Office 0117 982 0000  
[www.bristolport.co.uk](http://www.bristolport.co.uk)  
Port Police 01275 375 787

## LOCAL PORT HEALTH AUTHORITY

 Bristol Port Health 0117 938 1171  
(Bristol City Council) [port.health@bristol.gov.uk](mailto:port.health@bristol.gov.uk)

## MARITIME AND COASTGUARD AGENCY UK

[CardiffMO@mcga.gov.uk](mailto:CardiffMO@mcga.gov.uk) 02039 085 220

## PLACES OF WORSHIP

Details of local places of worship for all denominations are available at the seafarers' centre. Depending on driver availability, transport may also be organised by contacting the centre on 01275 374 895.

## TOURIST INFORMATION

[www.visitbristol.co.uk](http://www.visitbristol.co.uk)

## LIBRARY

Bristol Central Library, College Green 0117 903 7700

## SHOPPING

The Mall at Cribbs Causeway is home to all the major retail chains and is only a 10 minute drive from the seafarers' centre. Bristol City Centre is also home to all the major retail chains as well as many visitor attractions.

B&M Home Store, Cribbs Causeway	0117 950 3301
Asda Supercentre, Highwood Lane	0117 317 2400
Boots the Chemist, Cribbs Causeway	0117 650 9744
Vision Express Opticians, Cribbs Causeway	0117 950 0857

## POST OFFICE, BANKS & MONEY TRANSFER

Limited money exchange is available through the seafarers' centre. Depending on driver availability, transport to the post office, banks and money transfer facilities at Cribbs Causeway Shopping Centre can be provided via the centre on 01275 374 895.

## ENTERTAINMENT

Science Museum (We Are Curious), Millennium Square <a href="http://www.wearecurious.org">www.wearecurious.org</a>	0117 915 1000
Bristol Aquarium, Harbourside <a href="http://www.bristolaquarium.co.uk">www.bristolaquarium.co.uk</a>	0117 929 8929
SS Great Britain, Gas Ferry Road <a href="http://www.ssgreatbritain.org">www.ssgreatbritain.org</a>	0117 926 0680
Vue Cinema, Cribbs Causeway	0345 308 4620

## SPORTS FACILITIES

Parish Wharf Leisure Centre, Portishead (Swimming & Gym)	01275 848 494
Henbury Leisure Centre, Avonmouth Way (Swimming & Gym)	0117 353 2555

## PUBLIC TRANSPORT

<b>Air:</b> Bristol International Airport <a href="http://www.bristolairport.co.uk">www.bristolairport.co.uk</a>	0871 334 4444
<b>Train:</b> National Rail Enquiries <a href="http://www.nationalrail.co.uk">www.nationalrail.co.uk</a>	03457 48 49 50
<b>Coach:</b> Stagecoach Buses <a href="http://www.stagecoachbus.com">www.stagecoachbus.com</a>	0808 506 6388
<b>Bus:</b> Trainline (South West) <a href="http://www.travelinesw.com">www.travelinesw.com</a>	0871 200 2233

## TAXIS

Portbury: County Cars	01275 843 434
Avonmouth: Shirelink Taxis	0117 966 6888

## LOCAL HOSPITAL

<b>Accident &amp; Emergency</b> Bristol Royal Infirmary, Marlborough St.	0117 342 1000
<b>Minor Injuries Unit</b> Southmead Hospital, Southmead Rd.	0117 323 5100
NHS Helpline	111

