

UNMANNED SEAFARER CENTRE



Montrose Seafarer Centre
North Quay, Montrose Harbour
(East end of quay, next to pilot station)

Available 24 hours, free internet tea & coffee.

Door key pad is the pedestrian gate code.

Details from port control 01674 672 302.

PORT TRANSPORT

There is no regular port transport service available, but the town centre facilities are within a safe walking distance of the port.

PORT OFFICE & SECURITY



Montrose Port Authority
www.montroseport.co.uk

01674 672 302

LOCAL PORT HEALTH AUTHORITY



Angus Council
envhealth@angus.gov.uk

01241 465 210

MARITIME AND COASTGUARD AGENCY UK

AberdeenMO@mcga.gov.uk

020 3817 2001



INTERPRETERS

The Port Chaplain has access to local interpreters to help with their work - including French, Polish, Portuguese, Ukrainian and Arabic.



SEAFARERS' TELEPHONE HELPLINE

SeafarerHelp...the lifeline for seafarers (ISWAN)
www.seafarerhelp.org (all seafarers) +44 (0)20 7323 2737



Produced by the Merchant Navy Welfare Board and the local seafarers' welfare charities. The MNWB is registered as a charity No.212799 in England & Wales and No.SC039669 in Scotland. Port map courtesy of Montrose Port Authority. Photos courtesy of Sailors' Society. Please pass any amendments directly to MNWB on 02380 337799 or visit: www.mnwb.org

Issue Date 11/23

PORT INFORMATION LEAFLET

MONTROSE

Welcomes All Seafarers



SHIP WELFARE VISITING ORGANISATIONS



Sailors' Society
Port Chaplain
www.sailors-society.org

07470 099 072



Stella Maris
Port Chaplain
www.stellamaris.org.uk

07757 042 722



The Mission to Seafarers
www.missiontoseafarers.org

07581 625 941



Norwegian Seamen's Mission
Port Chaplain
www.sjomannskirken.no

07768 472 134



ITF Inspector
ITF HQ
www.itfseafarers.org

07539 171 323
wilson_liam@itf.org.uk
seafsupport@itf.org.uk



Nautilus International
www.nautilusint.org

0208 989 6677



RMT
www.rmt.org.uk

0800 376 3706



Scan here to
download a
digital copy of
this leaflet



BANKS / POST OFFICE / MONEY TRANSFER

Post Office, High Street 01674 673 459
(incs. Western Union and MoneyGram)
Located in the ScotMid Co-op convenience store

*A selection of major banks have branches located in the town centre.

SHOPPING

Tesco, Western Road 0345 677 9478

Aldi, Basin View 0800 042 0800

Angus Tech, High Street 01674 660 277

(Mobile phone sales & repairs - with discounts on all IT equipment to seafarers)

U Grubaska (Polish shop) 20 High Street

* There are a variety of charity shops located in the town centre, where you can buy clothes and presents.

THINGS TO DO

www.visitangus.com

Montrose Sports Centre, Marine Avenue 01674 907 600
(Swimming & Gym)

Montrose Museum, Panmure Place 01674 907 447
Montrose Playhouse, The Mall
(Cinema & Arts Centre)
www.montroseplayhouse.co.uk

Montrose Air Station Heritage Centre, 01674 678 222
Waldon Road
www.rafmontrose.org.uk

PLACES OF WORSHIP

Catholic:

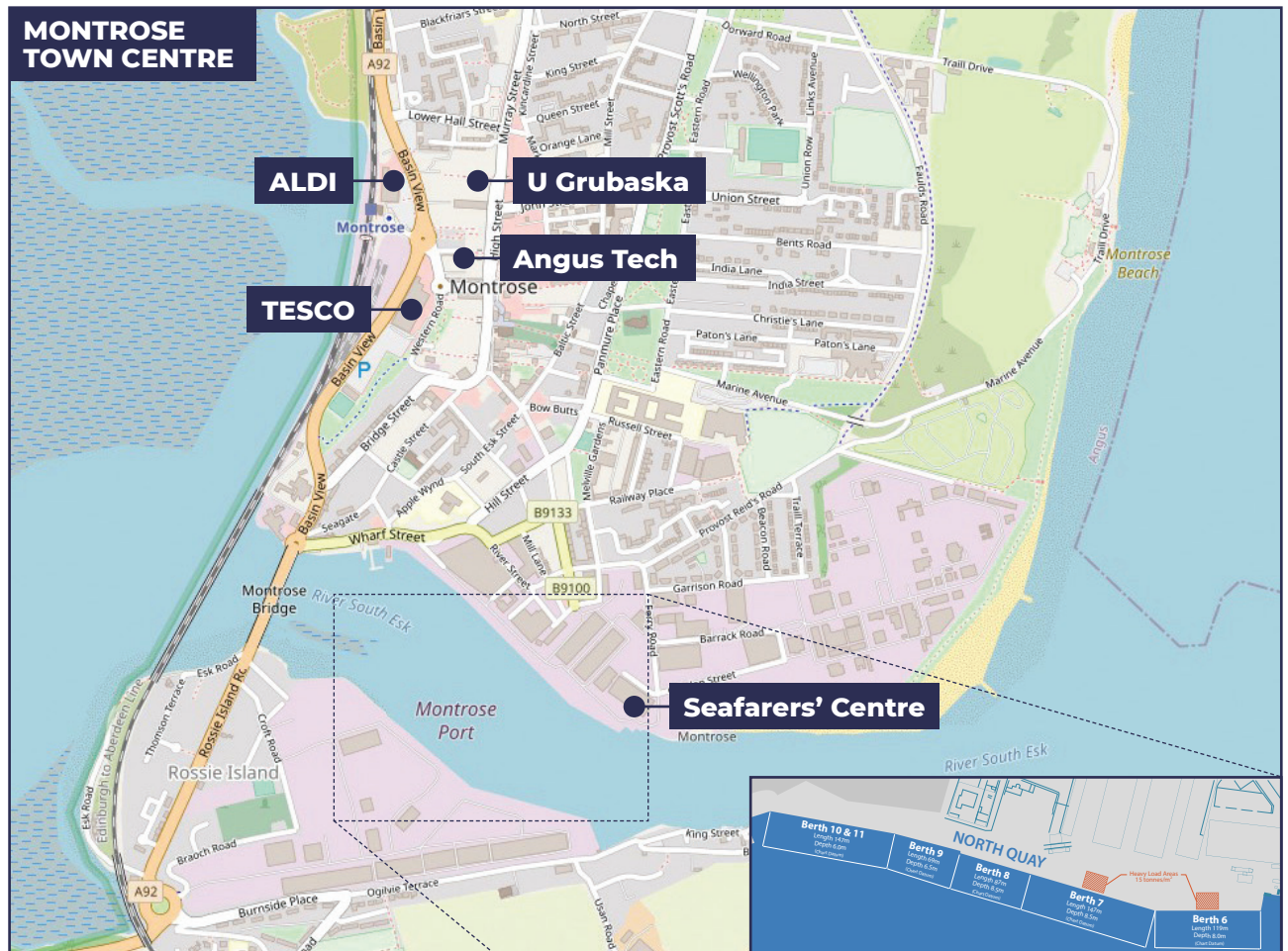
St Margaret's Church, Market Street 01674 672 208

Anglican:

Trinity Church, High Street 01674 672 447

Evangelical:

Grace Church (based at the Playhouse Arts Centre)
www.gracechurchmontrose.com



CHEMIST / OPTICIAN

Boots the Chemist, High Street 01674 676 455

Specsavers, High Street 01674 679 080

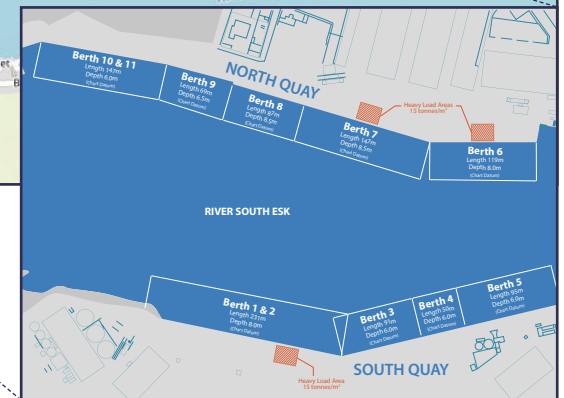
Davidsons Chemist, High Street 01674 672 401

PUBLIC TRANSPORT

Train: National Rail Enquiries 0345 748 4950
www.nationalrail.co.uk

Bus: TraveLine (Scotland) 0871 200 2233
www.travelinescotland.com

Taxi: Lucian Taxis 07484 653 357
Aero Cars 07368 931 509



LOCAL HOSPITALS

A&E: Ninewells Hospital, Dundee 01382 660 111

Minor Injuries Unit: 01241 872 584

Arbroath Infirmary, Rosemount Road
(Open 08:00 to 20:00 7 days a week)

NHS Helpline:
www.nhs24.com